

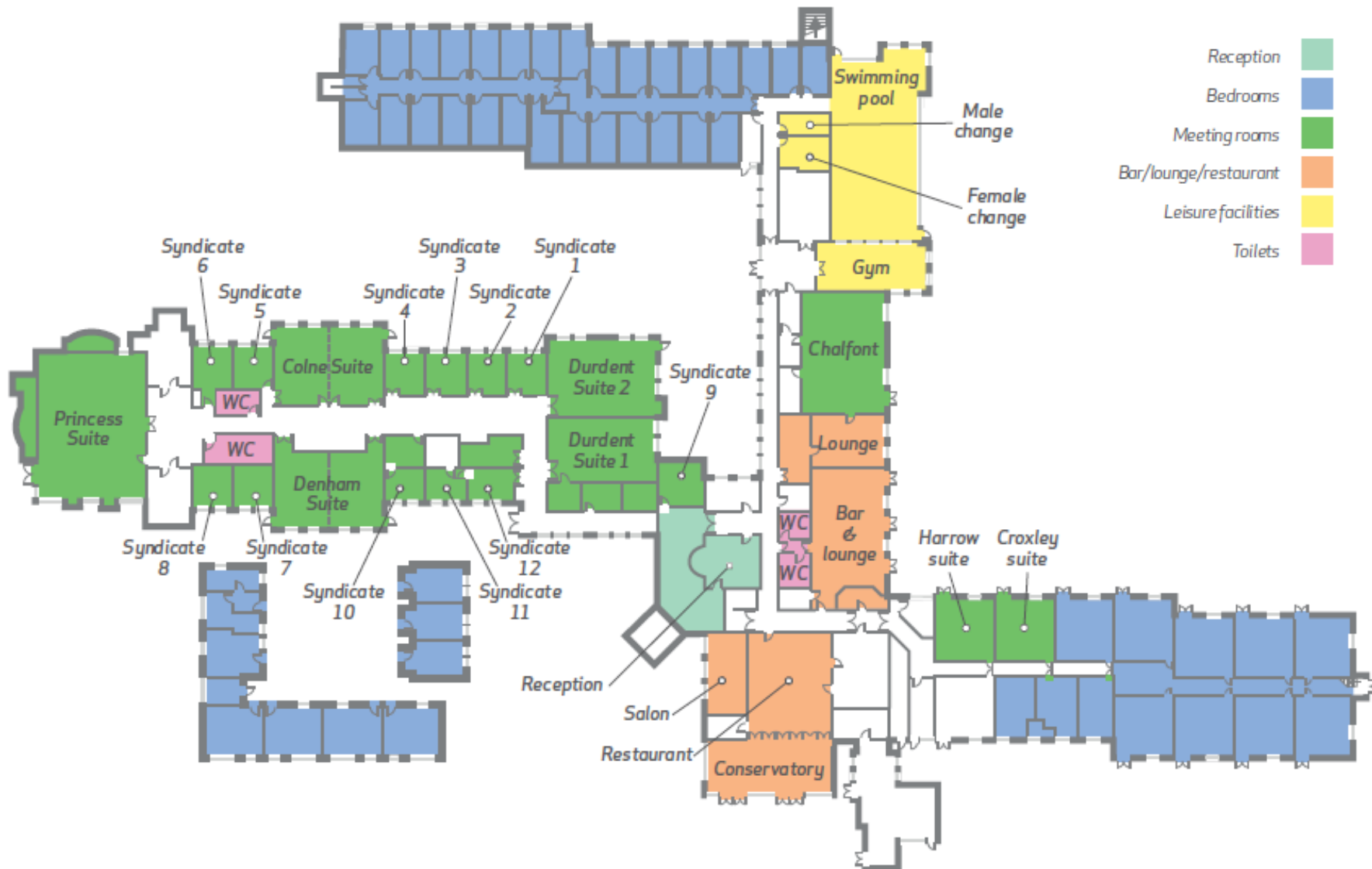
# DENHAM GROVE

## Uxbridge

01895 836 932

[denhamconference@denhamgrove.com](mailto:denhamconference@denhamgrove.com)

Tilehouse Lane, Denham, Uxbridge, Bucks, UB9 5DG





*If you're looking for a tranquil setting for your event then Denham Grove is the natural choice.*

*Set in 42 acres of beautiful parkland, just to the northwest of London, getting here couldn't be simpler, with easy access via the M40 and M25.*

*We make the most of our rural location with a modern design that has all the facilities you'll need to host a successful meeting, training or team-building event.*



*Here the focus is on your needs – and our friendly team has the know-how to create the perfect bespoke business experience just for you.*

*So join us at Denham Grove where our dedicated team will make any event a real success - it's why we're recognised as the UK's number one in dedicated business, meeting and training space.*

Room Name	Dimensions (m)	U-shape	Board room	Class room	Theatre	Cabaret	Banquet	AV&AC
Princess Suite	16 x 12	50	60	70	180	108	140	Ceiling projection & built in sound. Portable PA system available with 1 mic. Air Conditioned.
Princess 1	10.5 x 12	32	30	40	100	45	-	Ceiling projection & built in sound. 2 hand held mics and 2 lapel mics. Blu ray player. Air Conditioned.
Princess 2	5 x 12	20	28	24	40	30	-	-
Durdent Suite	16 x 12	50	60	70	180	108	140	Ceiling projection & built in sound. Air Conditioned.
Durdent 1 / 2	8 x 12	28	36	30	80	36	-	Ceiling projection & built in sound. Air Conditioned.
Denham Suite / Colne Suite	8 x 12	28	30	30	80	56	-	Ceiling projection & built in sound. Air Conditioned.
Denham 1 / 2 Colne 1 / 2	8 x 6	18	20	18	30	24	-	Ceiling projection & built in sound. Air Conditioned.
Chalfont Suite	13 x 9	30	40	30	120	50	70	Ceiling projection & built in sound. 2 hand held mics and 2 lapel mics. Blu ray player. Air Conditioned.
Harrow Suite / Croxley Suite	6 x 6	12	14	10	20	15	-	-
Syndicate Rooms [x11]	Various	-	10	-	-	-	-	Plasma screen in Syndicate 10 & 12. AC in Syndicate 6 & 12.



### ***Day Delegate Package includes:***

*Hire of main meeting room  
Projector, flipchart and screen  
Unlimited tea and coffee  
3 course buffet lunch or working lunch  
Complimentary car parking  
Complimentary wi-fi*

### ***24 Hour Package includes:***

*All Day Delegate Package inclusions  
3 course dinner  
Overnight accommodation with breakfast  
Use of leisure facilities*



*Along with our purpose built conference centre,  
Denham Grove has a modern and comfortable  
restaurant, relaxing bar lounge, 100 en suite  
bedrooms and leisure centre with a gym, pool,  
Jacuzzi and sauna.*





Ground floor

### Conference equipment

A diagram showing four rectangles arranged in a 2x2 grid. Below the center of the grid is a single rectangle. Each rectangle has a small vertical line segment at its top center, representing a connection point to a common horizontal line above the grid.



Flipchart

Trainers ToolBox

Lecturn

2x handheld Microphones

2x lapel Microphones

### Ceiling Mounted Projector

## Blu-ray Player

Specialist conference equipment  
can be ordered as required

← Entrance

**T** Telephone

- *Power Point*

**PSL** Profile Spot Light - Ceiling Height

LC Lighting Control

PA PA Control

## 0 3-Phase Power Point

**M** Microphone Point

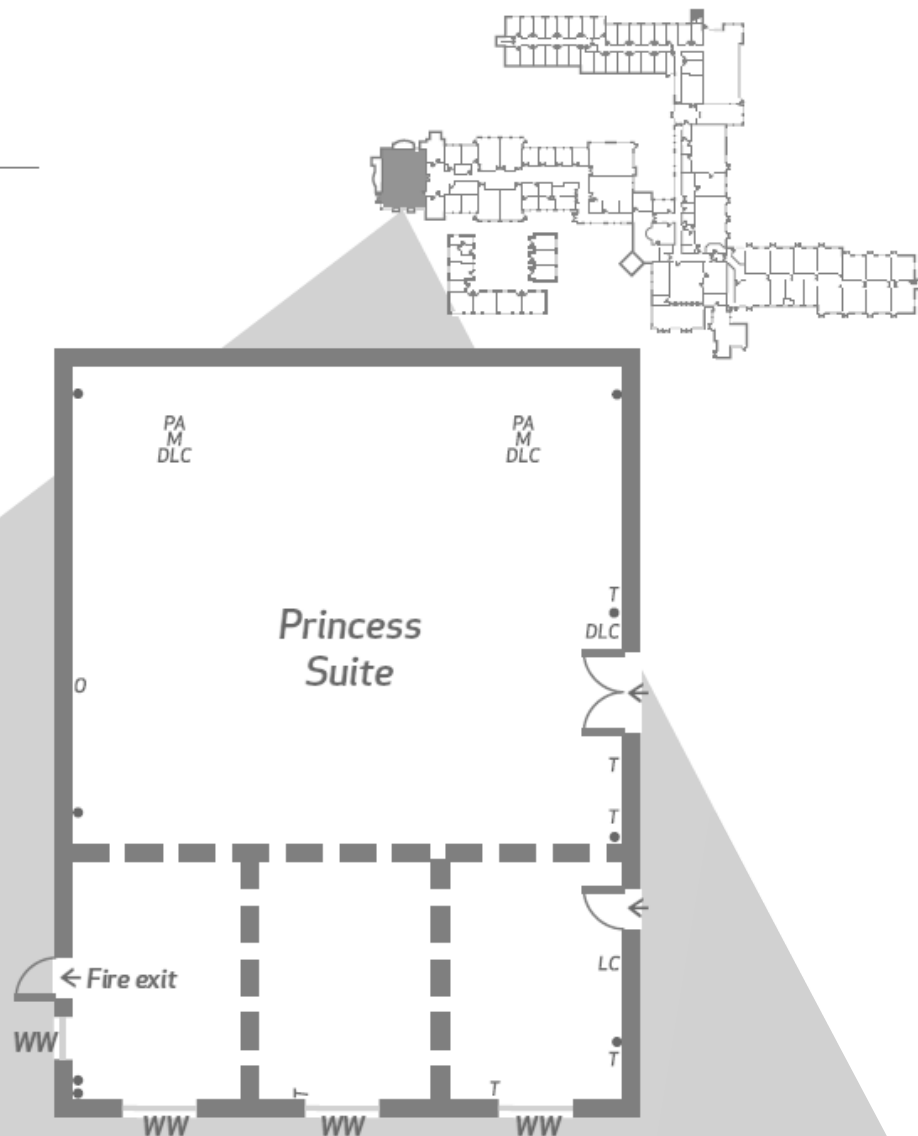
**DLC** Dimmer Lighting Control

WW Window

CS Coffee Station

W Water Dispenser/Cooler

Room dimensions  
12 x 16m (approx)









# Durdent Suite

Ground floor

## Configure your room

Theatre  
180



Classroom  
70



Boardroom  
60



Cabaret  
108



Banquet  
140



U-shape  
50



## Conference equipment

Whiteboard

Screen

Flipchart

Trainers ToolBox

Ceiling Mounted Projector

2x handheld Microphones

2x lapel Microphones

Blu-ray Player

Specialist conference equipment  
can be ordered as required

### Key

← Entrance

T Telephone

• Power Point

PSL Profile Spot Light - Ceiling Height

LC Lighting Control

PA PA Control

O 3-Phase Power Point

M Microphone Point

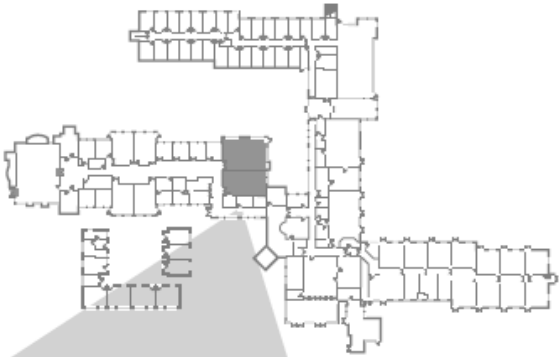
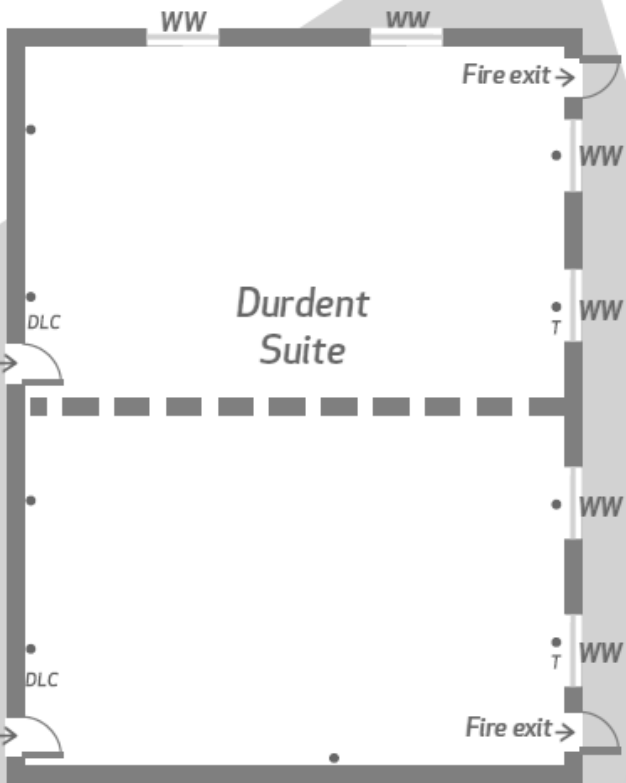
DLC Dimmer Lighting Control

WW Window

CS Coffee Station

W Water Dispenser/Cooler

Room dimensions  
12 x 16m (approx)





# Denham Suite

Ground floor

## Configure your room

Theatre  
80



Classroom  
30



Boardroom  
30



Cabaret  
56



U-shape  
28



## Conference equipment

Whiteboard

Screen

Flipchart

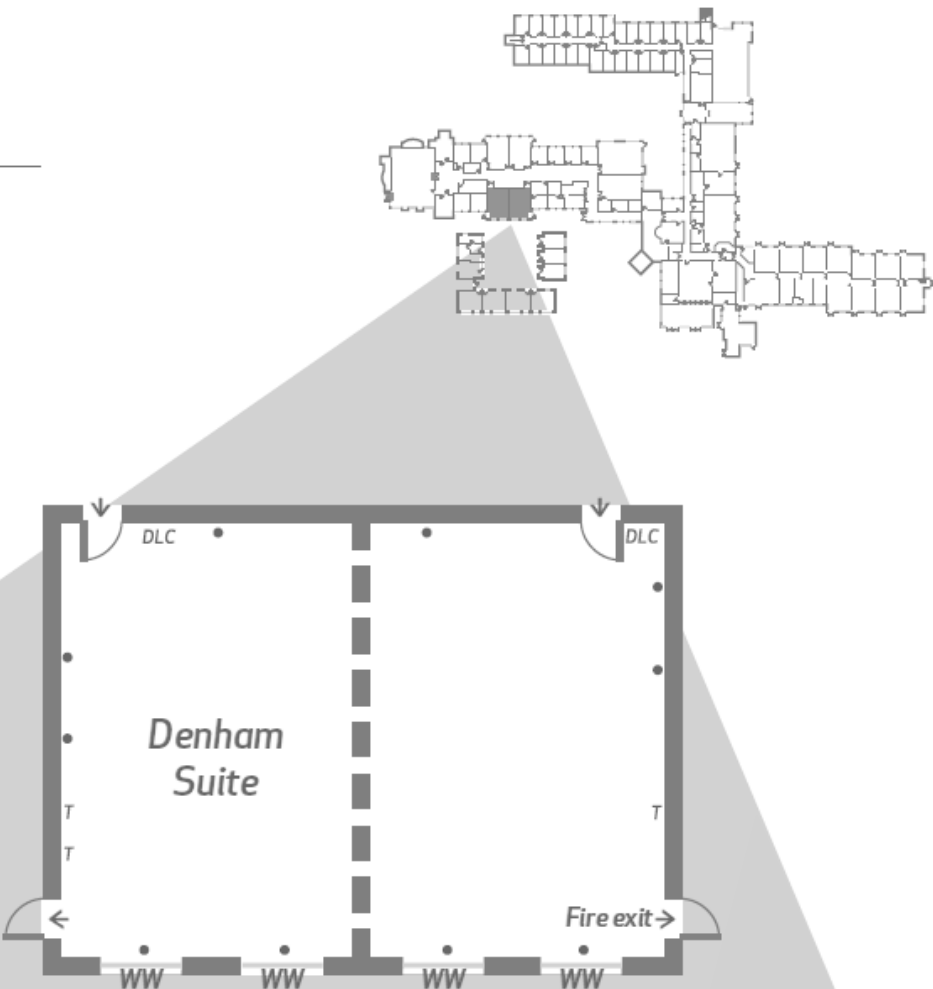
Trainers ToolBox

Specialist conference equipment  
can be ordered as required

### Key

←	Entrance	O	3-Phase Power Point
T	Telephone	M	Microphone Point
•	Power Point	DLC	Dimmer Lighting Control
PSL	Profile Spot Light - Ceiling Height	WW	Window
LC	Lighting Control	CS	Coffee Station
PA	PA Control	W	Water Dispenser/Cooler

Room dimensions  
9 x 12m (approx)





*Easy parking - 180 complimentary spaces*



*Denham Station - 1 mile*

*Regular Intercity trains to and from London Marylebone [20 minutes]*



*Heathrow Airport - 10 miles*

*Gatwick Airport - 50 miles*

